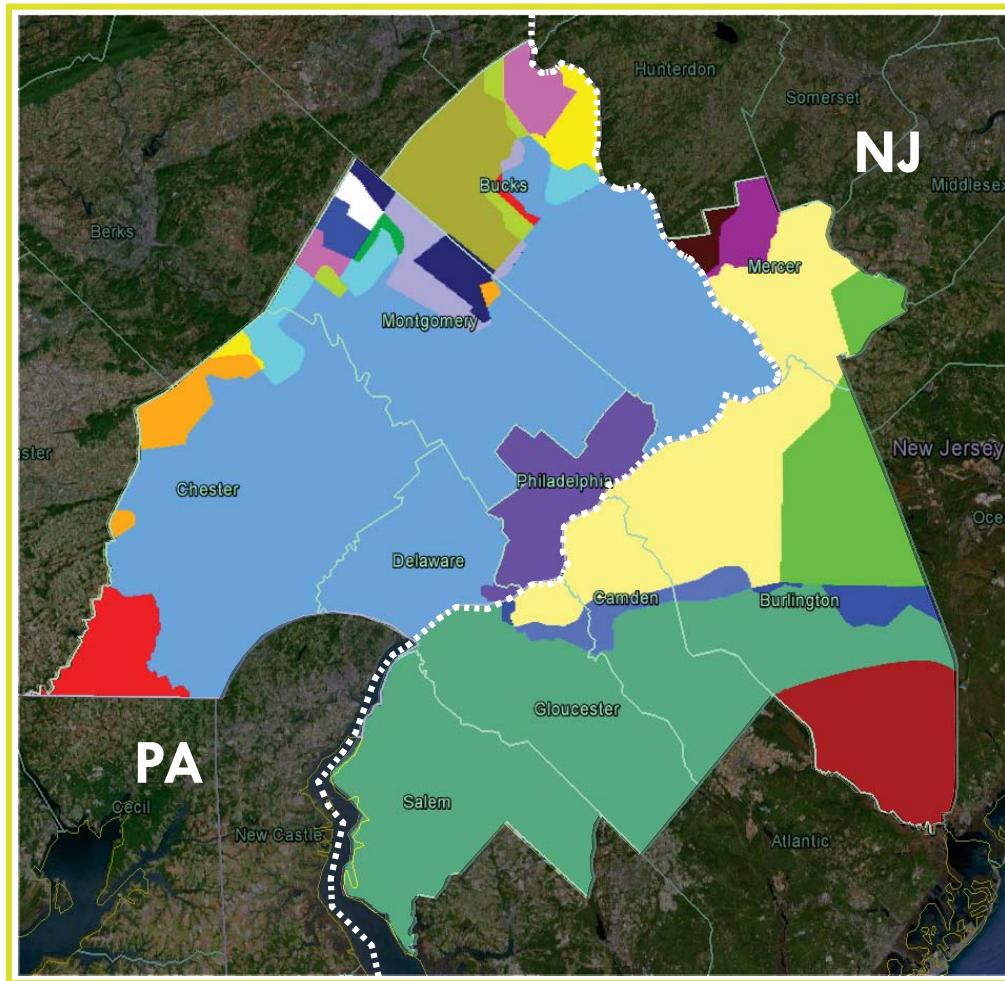


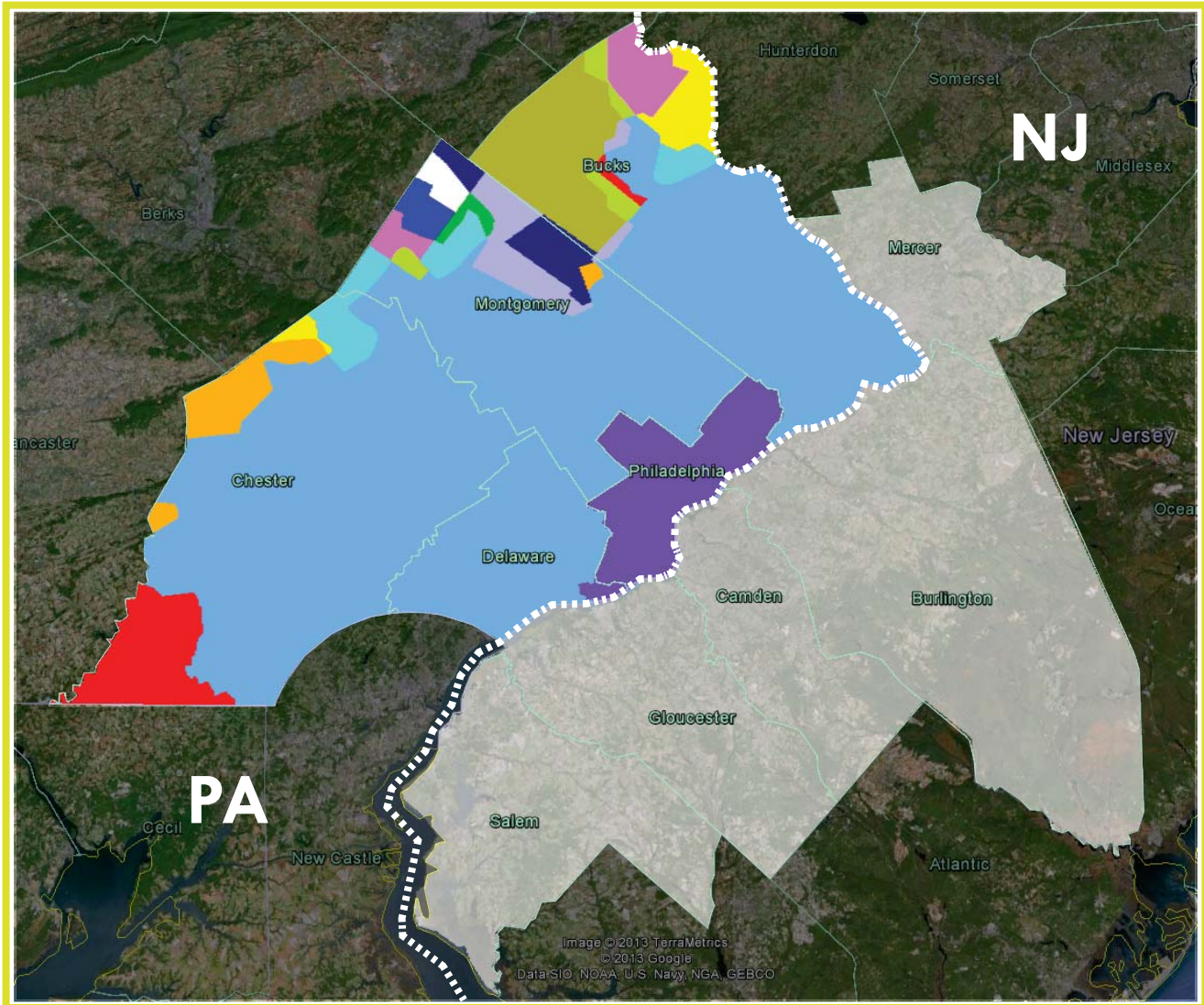
## EEBHub Ten-County Region



### Welcome to the EEBHub Incentive Program Guide.

This guide will help building owners understand the financial incentive programs available in the region for energy efficient upgrades. Building owners can use the maps and zip code tables to determine the programs available to them based on building location and utility service provider. Each program description includes a link to further information.

### PENNSYLVANIA: BUCKS, CHESTER, DELAWARE, MONTGOMERY, PHILADELPHIA



- |  |   |
|--|---|
| <span style="color: red;">■</span> State, PECO, Sharp, UGI, Energy Works, Veolia             | <span style="color: darkblue;">■</span> State, PPL, Sharp, Energy Works, Veolia                     |
| <span style="color: orange;">■</span> State, Sharp, Energy Works, Veolia                     | <span style="color: green;">■</span> State, Met-Ed, PECO, PPL, Sharp, Energy Works, Veolia          |
| <span style="color: yellow;">■</span> State, Met-Ed, Sharp, Energy Works, Veolia             | <span style="color: purple;">■</span> State, PECO, PPL, Sharp, Energy Works, Veolia                 |
| <span style="color: cyan;">■</span> State, Met-Ed, PECO, Sharp, Energy Works, Veolia         | <span style="color: olive;">■</span> State, PPL, Sharp, UGI, Energy Works, Veolia                   |
| <span style="color: lightgreen;">■</span> State, Sharp, UGI, Energy Works, Veolia            | <span style="color: blue;">■</span> State, PECO, Sharp, Energy Works, Veolia                        |
| <span style="color: pink;">■</span> State, Met-Ed, Sharp, UGI, Energy Works, Veolia          | <span style="border: 1px dashed white;">□</span> State, Met-Ed, PPL, Sharp, Energy Works, Veolia    |
| <span style="color: darkblue;">■</span> State, Met-Ed, PPL, Sharp, UGI, Energy Works, Veolia | <span style="color: purple;">■</span> State, City of Phila., PECO, PGW, Sharp, Energy Works, Veolia |

### PENNSYLVANIA: BUCKS, CHESTER, DELAWARE, MONTGOMERY, PHILADELPHIA

	State	En. Works	Phila.	Met-Ed	PECO	PPL	UGI	Sharp	PGW	Veolia
17527	X	X						X		X
18036	X	X				X	X			X
18039	X	X		X			X	X		X
18041	X	X		X		X	X			X
18054	X	X		X	X	X	X			X
18055	X	X				X	X			X
18070	X	X		X						X
18073	X	X		X	X	X	X			X
18074	X	X		X	X	X	X			X
18076	X	X		X		X				X
18077	X	X		X		X	X			X
18081	X	X				X				X
18084	X	X		X	X	X	X	X		X
18901	X	X			X					X
18902	X	X			X		X			X
18910	X	X			X		X			X
18911	X	X					X	X		X
18912	X	X			X					X
18914	X	X			X		X			X
18915	X	X				X				X
18917	X	X			X		X			X
18920	X	X		X						X
18923	X	X			X		X			X
18925	X	X			X					X
18927	X	X				X				X
18929	X	X			X					X
18930	X	X		X			X			X
18932	X	X			X	X	X			X
18933	X	X			X					X
18934	X	X			X					X
18935	X	X				X				X
18936	X	X			X					X
18938	X	X			X					X

	State	En. Works	Phila.	Met-Ed	PECO	PPL	UGI	Sharp	PGW	Veolia
18940	X	X			X					X
18942	X	X		X	X		X			X
18944	X	X			X	X	X			X
18947	X	X		X	X					X
18951	X	X				X	X			X
18954	X	X			X					X
18955	X	X				X	X			X
18960	X	X				X	X			X
18964	X	X			X	X	X			X
18966	X	X			X					X
18969	X	X			X	X	X			X
18970	X	X				X				X
18972	X	X		X			X			X
18974	X	X			X					X
18976	X	X			X					X
18977	X	X			X					X
19001	X	X			X					X
19002	X	X			X					X
19003	X	X			X					X
19004	X	X			X					X
19006	X	X			X					X
19007	X	X			X					X
19008	X	X			X					X
19009	X	X			X					X
19010	X	X			X					X
19012	X	X			X					X
19013	X	X			X					X
19014	X	X			X					X
19015	X	X			X					X
19017	X	X			X					X
19018	X	X			X					X
19020	X	X			X					X
19021	X	X			X					X



### PENNSYLVANIA: BUCKS, CHESTER, DELAWARE, MONTGOMERY, PHILADELPHIA

	State	En. Works	Phila.	Met-Ed	PECO	PPL	UGI	Sharp	PGW	Veolia
19022	X	X			X					X
19023	X	X			X					X
19025	X	X			X					X
19026	X	X			X					X
19027	X	X			X					X
19029	X	X			X					X
19030	X	X			X					X
19031	X	X			X					X
19032	X	X			X					X
19022	X	X			X					X
19023	X	X			X					X
19025	X	X			X					X
19026	X	X			X					X
19027	X	X			X					X
19029	X	X			X					X
19030	X	X			X					X
19031	X	X			X					X
19032	X	X			X					X
19033	X	X			X					X
19034	X	X			X					X
19035	X	X			X					X
19036	X	X			X					X
19038	X	X			X					X
19040	X	X			X					X
19041	X	X			X					X
19043	X	X			X					X
19044	X	X			X					X
19046	X	X			X					X
19047	X	X			X					X
19050	X	X			X					X
19052	X	X			X					X
19053	X	X			X					X
19054	X	X			X					X

	State	En. Works	Phila.	Met-Ed	PECO	PPL	UGI	Sharp	PGW	Veolia
19055	X	X			X					X
19056	X	X			X					X
19057	X	X			X					X
19061	X	X			X					X
19063	X	X			X					X
19064	X	X			X					X
19066	X	X			X					X
19067	X	X			X					X
19070	X	X			X					X
19072	X	X			X					X
19073	X	X			X			X		X
19074	X	X			X					X
19075	X	X			X					X
19076	X	X			X					X
19078	X	X			X					X
19079	X	X			X					X
19081	X	X			X					X
19082	X	X			X					X
19083	X	X			X					X
19085	X	X			X					X
19086	X	X			X					X
19087	X	X			X			X		X
19090	X	X			X					X
19094	X	X			X					X
19095	X	X			X					X
19096	X	X			X			X		X
19102	X	X	X		X				X	X
19103	X	X	X		X				X	X
19104	X	X	X		X			X	X	X
19106	X	X	X		X				X	X
19107	X	X	X		X				X	X
19109	X	X			X					X
19110	X	X			X					X

### PENNSYLVANIA: BUCKS, CHESTER, DELAWARE, MONTGOMERY, PHILADELPHIA

	State	En. Works	Phila.	Met-Ed	PECO	PPL	UGI	Sharp	PGW	Veolia
19111	X	X	X		X				X	X
19112	X	X			X				X	X
19113	X	X			X				X	X
19114	X	X	X		X				X	X
19115	X	X			X				X	X
19116	X	X	X		X				X	X
19118	X	X	X		X				X	X
19119	X	X	X		X				X	X
19120	X	X	X		X				X	X
19121	X	X	X		X				X	X
19122	X	X	X		X				X	X
19123	X	X	X		X				X	X
19124	X	X			X				X	X
19125	X	X	X		X				X	X
19126	X	X	X		X				X	X
19127		X	X						X	X
19128	X	X	X		X				X	X
19129	X	X	X		X				X	X
19130	X	X	X		X				X	X
19131	X	X	X		X				X	X
19132	X	X			X				X	X
19133		X							X	X
19134	X	X	X		X				X	X
19135	X	X	X		X				X	X
19136	X	X	X		X				X	X
19137	X	X	X		X				X	X
19138	X	X	X		X				X	X
19139	X	X	X		X			X	X	X
19140	X	X	X		X				X	X
19141	X	X	X		X				X	X
19142	X	X	X		X			X	X	X
19143	X	X	X		X			X	X	X
19144	X	X	X		X				X	X

	State	En. Works	Phila.	Met-Ed	PECO	PPL	UGI	Sharp	PGW	Veolia
19145	X	X	X		X			X	X	X
19146	X	X	X		X			X	X	X
19147	X	X	X		X				X	X
19148	X	X	X		X				X	X
19149	X	X	X		X				X	X
19150	X	X	X		X				X	X
19151	X	X	X		X			X	X	X
19152	X	X	X		X				X	X
19153	X	X	X		X			X	X	X
19154	X	X	X		X				X	X
19176	X	X			X			X		X
19301	X	X			X			X		X
19310	X	X						X		X
19311	X	X			X			X		X
19312	X	X			X			X		X
19317	X	X			X			X		X
19319	X	X			X					X
19320	X	X			X			X		X
19330	X	X			X		X	X		X
19333	X	X			X			X		X
19335	X	X			X			X		X
19341	X	X			X					X
19342	X	X			X					X
19343	X	X			X			X		X
19344	X	X			X	X		X		X
19348	X	X						X		X
19350	X	X			X		X	X		X
19352	X	X			X			X		X
19355	X	X			X			X		X
19362	X	X			X		X	X		X
19363	X	X			X		X	X		X
19365	X	X						X		X
19372	X	X			X			X		X

### PENNSYLVANIA: BUCKS, CHESTER, DELAWARE, MONTGOMERY, PHILADELPHIA

	State	En. Works	Phila.	Met-Ed	PECO	PPL	UGI	Sharp	PGW	Veolia
19373	X	X			X					X
19374	X	X			X			X		X
19380	X	X			X			X		X
19382	X	X			X			X		X
19383	X	X						X		X
19390	X	X			X		X	X		X
19395	X	X						X		X
19403	X	X			X					X
19422	X	X			X					X
19425	X	X			X			X		X
19426	X	X			X					X
19428	X	X			X					X
19435	X	X		X			X			X
19436	X	X			X					X
19438	X	X			X					X
19440	X	X			X	X	X			X
19444	X	X			X					X
19446	X	X			X	X				X
19453	X	X			X					X
19454	X	X			X					X
19460	X	X			X			X		X
19464	X	X		X	X					X
19465	X	X		X	X			X		X
19468	X	X			X					X
19472	X	X					X			X
19473	X	X			X					X
19475	X	X			X			X		X
19492	X	X		X	X					X
19504	X	X		X			X			X
19505	X	X		X			X			X
19512	X	X		X			X			X
19520	X	X		X	X	X		X		X
19525	X	X					X			X

	State	En. Works	Phila.	Met-Ed	PECO	PPL	UGI	Sharp	PGW	Veolia
19543	X	X				X				X

## PENNSYLVANIA: BUCKS, CHESTER, DELAWARE, MONTGOMERY, PHILADELPHIA

### State of Pennsylvania

#### High Performance Building Program

*Department of Community & Economic Development (DCED)*

*Department of Environmental Protection (DEP)*

Provides financial assistance in the form of grants and loan funds to underwrite the cost premiums associated with the design and construction or major renovation of high performance buildings in the state.

<http://www.newpa.com/find-and-apply-for-funding/funding-and-program-finder/high-performance-building-program-hpb>

#### Alternative and Clean Energy Program

*Department of Community & Economic Development (DCED)*

*Department of Environmental Protection (DEP)*

Provides financial assistance in the form of grant and loan funds that will be used by eligible applicants for the utilization, development and construction of alternative and clean energy projects in the state.

<http://www.newpa.com/find-and-apply-for-funding/funding-and-program-finder/alternative-and-clean-energy-program-ace>

#### High Performance Green School Planning Grant

*Department of Education*

Covers costs directly associated with obtaining LEED for Schools Silver, Gold, or Platinum certification.

[http://www.gggc.state.pa.us/portal/server.pt/community/schools/13838/high\\_performance\\_green\\_school\\_planning\\_grant\\_welcome\\_letter/588218](http://www.gggc.state.pa.us/portal/server.pt/community/schools/13838/high_performance_green_school_planning_grant_welcome_letter/588218)

#### Pollution Prevention Assistance Account (PPAA) Program

*Department of Environmental Protection (DEP)*

Provides low interest loans to small businesses undertaking projects that reduce waste, pollution or energy use.

<http://www.portal.state.pa.us/portal/server.pt?open=514&objID=553247&mode=2>

### Energy Works -

#### *Philadelphia Region*

#### Energy Works - Commercial Program

*Metropolitan Caucus*

*Philadelphia Industrial Development Corporation (PIDC)*

*The Reinvestment Fund (TRF)*

Provides low-interest loans to help building owners invest in large-scale energy efficient building renovations or energy efficient systems and equipment. The commercial team provides expert assistance, including a building energy assessment, and brings together all available rebates and tax credits, working with building owners through each step of the process.

<http://www.energyworksnow.com/commercial>

### City of Philadelphia Programs

#### Greenworks Small Business Energy Efficiency Rebate

*Department of Commerce*

Encourages Philadelphia businesses and commercial property owners - especially those near transit hubs and along commercial corridors - to improve the energy efficiency of their operations by investing in structural retrofits and energy efficient processes/equipment. The program reimburses owners of commercial buildings and businesses who make energy efficiency improvements.

[https://business.phila.gov/documents/energy\\_rebate\\_application.pdf](https://business.phila.gov/documents/energy_rebate_application.pdf)

# PENNSYLVANIA: BUCKS, CHESTER, DELAWARE, MONTGOMERY, PHILADELPHIA

## Met-Ed (First Energy)

### High Efficiency Lighting Incentive Programs:

#### Non-Standard Lighting Incentives for Business

Intended for use with energy efficiency lighting projects, both new construction and retrofit, to support equipment and controls that can save energy (kWh). The program offers per-unit incentives as well as performance-based incentives.

<http://www.energysavepa-business.com/nslighting.html>

### High Efficiency Lighting Incentive Programs:

#### Street Lighting, Outdoor Lighting and Traffic Signals

Offers incentives and information to encourage participants to install high-efficiency streetlighting, outdoor area lighting and LED traffic signal lights.

<http://www.energysavepa-business.com/street.html>

### HVAC Incentive Programs

Offers incentives and information to encourage participants to install high-efficiency heating and air-conditioning equipment. Also, as a part of the HVAC Tune-Up, the program offers incentives for refrigerant charge correction (RCC) for existing equipment up to 20 tons.

<http://www.energysavepa-business.com/hvac.html>

### Motor & Drive Incentive Programs

NEMA Premium® rated, Open Drip-Proof (ODP) and Totally Enclosed Fan-Cooled (TEFC) motors from 1 to 200 HP are eligible for a per-motor incentive based on motor size and speed. Newly installed VSDs (where no drive previously existed) are eligible for an incentive of \$30 per horsepower controlled. Motor(s) must operate a minimum of 3,000 hours annually at a constant speed with uniform loading. Only AC induction motors are eligible for these incentives.

<http://www.energysavepa-business.com/motor.html>

### Specialty Incentive Programs

Offers incentives and information to encourage participants to install high efficiency refrigeration, food service and miscellaneous equipment not included in other incentive programs.

<http://www.energysavepa-business.com/specialty.html>

### Custom Incentive Programs

Offers incentives and information to encourage participants to install energy-saving projects that do not meet the eligibility criteria for other programs.

<http://www.energysavepa-business.com/custom.html>

### Sustainable Energy Fund: Loans

Businesses using renewable energy in the operation of their business or that enhance energy efficiency and conservation are eligible.

[http://www.metedpenelecsef.org/index.php/component/content/article/80-apply/index.php?option=com\\_content&view=article&id=86](http://www.metedpenelecsef.org/index.php/component/content/article/80-apply/index.php?option=com_content&view=article&id=86)

### Sustainable Energy Fund: Equity Investments

Businesses using renewable energy in the operation of their business or that enhance energy efficiency and conservation are eligible.

[http://www.metedpenelecsef.org/index.php/component/content/article/80-apply/index.php?option=com\\_content&view=article&id=87](http://www.metedpenelecsef.org/index.php/component/content/article/80-apply/index.php?option=com_content&view=article&id=87)



# PENNSYLVANIA: BUCKS, CHESTER, DELAWARE, MONTGOMERY, PHILADELPHIA

## PECO Energy Company

### Smart Equipment Incentives

Assists nonresidential customers in improving the energy efficiency of their existing facilities through a broad range of energy efficiency options that address all major end uses and processes. This program offers incentives to customers who install high-efficiency electric equipment and engages equipment suppliers and contractors to promote the incentive-eligible equipment. The program is designed for retrofit and replacement projects and offers prescriptive and custom incentives for installation of energy efficient equipment.

<https://www.peco.com/CustomerService/RatesandPricing/RateInformation/Documents/PDF/New%20Filings/PECO%20Phase%20II%20PLAN.pdf>

### Smart Business Solutions

Assists small, nonresidential customers to improve the energy efficiency of their existing facilities through turn-key installation and rapid project completion. The program includes lighting, refrigeration, and water heating measures that are typically low-cost with reliable, prescriptive energy savings and costs per unit.

<https://www.peco.com/CustomerService/RatesandPricing/RateInformation/Documents/PDF/New%20Filings/PECO%20Phase%20II%20PLAN.pdf>

### Smart Multi-Family Solutions

Assists customers in improving the energy efficiency of their existing facilities through a broad range of energy efficiency options that address all major end uses. This program offers prescriptive incentives to multi-family building property owners who install high-efficiency equipment which address common areas or whole building improvements.

<https://www.peco.com/CustomerService/RatesandPricing/RateInformation/Documents/PDF/New%20Filings/PECO%20Phase%20II%20PLAN.pdf>

### Smart Construction Incentives

Provides facility designers and builders with training, design assistance, and incentives to incorporate energy efficient systems and construction practices in newly constructed and renovated facilities. Incentives are directed to facility owners but also available to upstream providers of design and construction services.

<https://www.peco.com/CustomerService/RatesandPricing/RateInformation/Documents/PDF/New%20Filings/PECO%20Phase%20II%20PLAN.pdf>

### Smart On-Site

Offers incentives to customers who install CHP technologies to reduce facility energy use.

<https://www.peco.com/CustomerService/RatesandPricing/RateInformation/Documents/PDF/New%20Filings/PECO%20Phase%20II%20PLAN.pdf>

# PENNSYLVANIA: BUCKS, CHESTER, DELAWARE, MONTGOMERY, PHILADELPHIA

## PPL Electric Utilities

### "e" Store

Online store that offers energy-efficient products at a discount for PPL customers.

<https://www.pplelectric.com/save-energy-and-money/rebate-and-incentive-programs/small-business/e-store.aspx>

### Custom Incentive Program

Provides financial incentives for extensive energy efficiency projects, retro-commissioning and equipment optimization that result in cost-effective, measureable electrical energy savings but are not covered by other PPL Electric Utilities energy efficiency programs. Participants may also qualify for 50% reimbursement of the cost of a technical study, with possible additional reimbursement following successful implementation of recommended projects.

Small Business: <https://www.pplelectric.com/save-energy-and-money/rebate-and-incentive-programs/small-business/custom-incentive.aspx>

Large C&I: <https://www.pplelectric.com/save-energy-and-money/rebate-and-incentive-programs/large-c-and-i/custom-incentive.aspx>

Institutional: <https://www.pplelectric.com/save-energy-and-money/rebate-and-incentive-programs/institutional/custom-incentive.aspx>

### Direct Discount Service

Provides no obligation facility assessment with rebates up to 75% of project costs to install energy efficient lighting and commercial refrigeration upgrades. In addition, energy consulting contractors handle all paperwork.

Small Business: <https://www.pplelectric.com/save-energy-and-money/rebate-and-incentive-programs/small-business/direct-discount-service.aspx>

Institutional: <https://www.pplelectric.com/save-energy-and-money/rebate-and-incentive-programs/institutional/direct-discount-service.aspx>

### Energy Efficiency Rebates

Offsets costs of investments in energy-efficient products and equipment. Includes Energy Star products, lighting, HVAC equipment and motors, refrigeration, and insulation.

Small Business: <https://www.pplelectric.com/save-energy-and-money/rebate-and-incentive-programs/small-business/energy-efficiency-rebates.aspx>

Large C&I: <https://www.pplelectric.com/save-energy-and-money/rebate-and-incentive-programs/large-c-and-i/energy-efficiency-rebates.aspx>

Institutional: <https://www.pplelectric.com/save-energy-and-money/rebate-and-incentive-programs/institutional/energy-efficiency-rebates.aspx>

### HVAC Tune-Up

Trained contractors use advanced diagnostic tools to perform complex tests and repairs that are independently analyzed and verified.

Small Business: <https://www.pplelectric.com/save-energy-and-money/rebate-and-incentive-programs/small-business/hvac-tune-ups.aspx>

Large C&I: <https://www.pplelectric.com/save-energy-and-money/rebate-and-incentive-programs/large-c-and-i/hvac-tune-ups.aspx>

Institutional: <https://www.pplelectric.com/save-energy-and-money/rebate-and-incentive-programs/institutional/hvac-tune-ups.aspx>

## PENNSYLVANIA: BUCKS, CHESTER, DELAWARE, MONTGOMERY, PHILADELPHIA

### Philadelphia Gas Works (PGW)

#### Commercial & Industrial Retrofit Incentive Program

For commercial and industrial firm rate customers who make energy efficiency improvements to their existing buildings.

<https://www.pgworks.com/index.aspx?NID=403>

#### Commercial & Industrial Equipment Rebates

For replacing natural gas heating or cooking equipment.

<https://www.pgworks.com/index.aspx?NID=429>

#### High Efficiency Construction Incentives

All commercial, industrial and multi-family buildings with single-fuel heating are eligible. Any measures that help the facility conserve energy can contribute to the projected savings. That includes cooking, process and HVAC equipment.

<https://www.pgworks.com/index.aspx?NID=432>

### UGI Utilities Inc.

#### Commercial & Industrial Appliance Rebate Program

Offsets purchase costs of energy efficient equipment. Includes thermostats, anti-sweat heater controls, ice maker, faucet aerators, steam cookers, Energy Star office equipment.

<http://theenergyguyatugi.com/ugieleccomm.php>

#### HVAC Tune-Up Program

Uses qualified contractors to identify performance inefficiencies and implement energy-saving adjustments and retrofits.

<http://theenergyguyatugi.com/ugieleccomm.php>

#### Combined Heat & Power Installation Program

To qualify, the end use of natural gas must be more efficient and cost-effective under the Total Resource Cost (TRC) test and the heat generated by the CHP equipment must be utilized for a useful purpose within the facility

<http://theenergyguyatugi.com/ugieleccomm.php>

#### Custom Incentive Program

Financial incentives for projects that result in cost-effective, measurable energy savings that are not covered by other energy efficiency programs.

<http://theenergyguyatugi.com/ugieleccomm.php>

### Sharp Energy

N/A

### Veolia

#### Steam Price Discounts – Green Steam\*

*\*only available in Philadelphia zip codes 19102, 19103, 19104, 19106, 19107, 19123, 19130, 19146*

Customer incentives are available for Veolia Energy's cogenerated steam. New customers and customers with annual steam consumption in excess of 5,000 MLBs with a minimum contract term of 5 years are eligible for discounts.

<http://www.veoliaenergyna.com/veolia-energy-north-america/locations/philadelphia.htm>

#### Customized Customer Incentives – Green Steam\*

*\*only available in Philadelphia zip codes 19102, 19103, 19104, 19106, 19107, 19123, 19130, 19146*

Customized customer incentives are also available. Discounted energy efficiency enhancements may include diagnostic testing, inspection and repair of all elements of the steam energy system including traps, valves, insulation, and meters, among other conservation improvements.

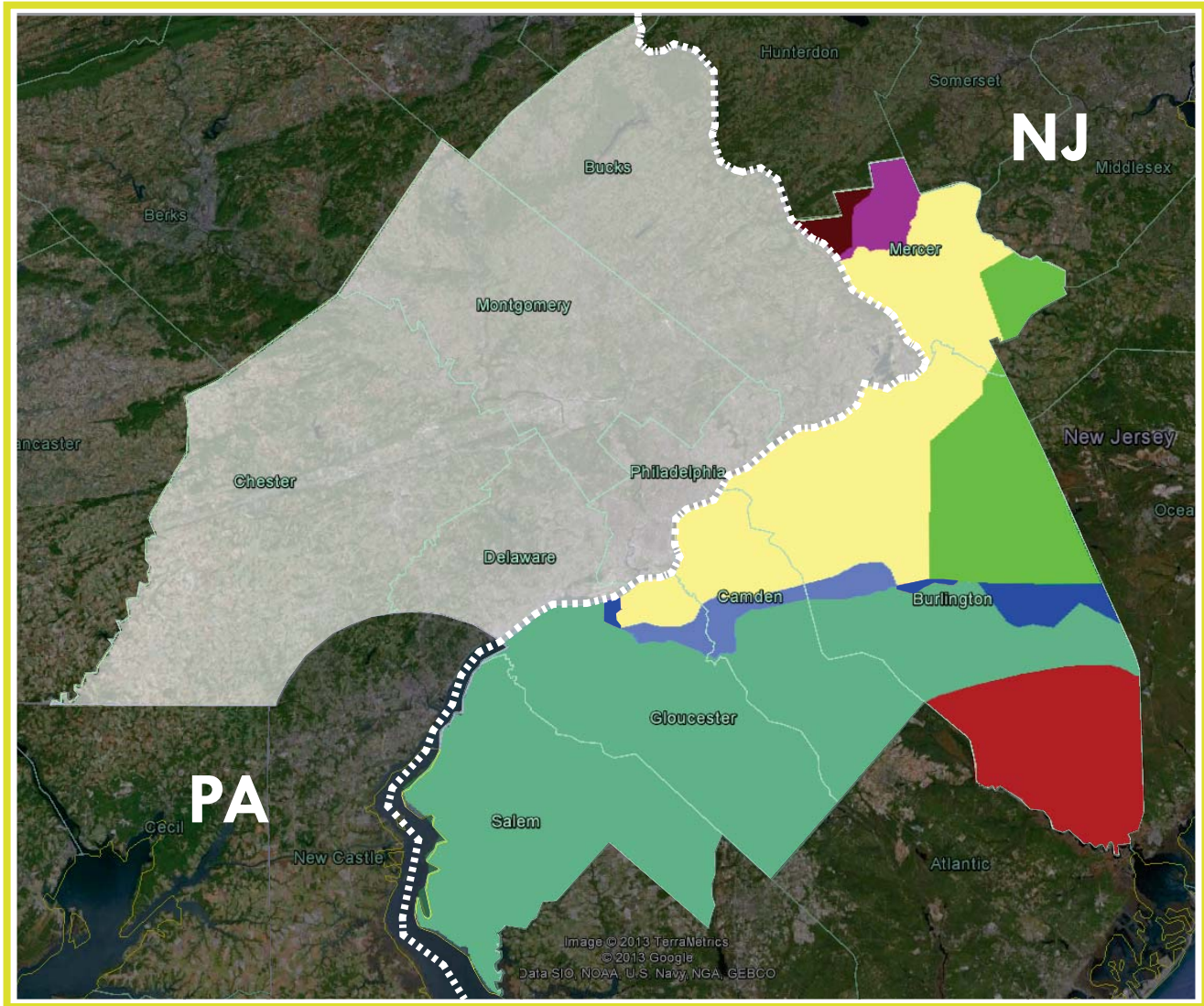
<http://www.veoliaenergyna.com/veolia-energy-north-america/locations/philadelphia.htm>









#### Customer Energy Solutions

Customized customer incentives are available for energy plant development, operations and maintenance. Veolia Energy can offer energy efficiency and performance guarantees for central utility plants and distributed energy systems throughout the Philadelphia region.

<http://www.veoliaenergyna.com/veolia-energy-north-america/locations/philadelphia.htm>

**NEW JERSEY: BURLINGTON, CAMDEN, GLOUCESTER, MERCER, SALEM**



- |  |   |
|--|---|
|  State, Elizabethtown Gas, JCP&L, Veolia          |  State, Atlantic City Electric, NJ Natural Gas, Veolia   |
|  State, Elizabethtown Gas, PSE&G Electric, Veolia |  State, Atlantic City Electric, South Jersey Gas, Veolia |
|  State, PSE&G Electric, PSE&G Gas, Veolia         |  State, PSE&G Electric, South Jersey Gas, Veolia         |
|  State, JCP&L, PSE&G Gas, Veolia                  |  State, Atlantic City Electric, PSE&G Gas, Veolia        |

### NEW JERSEY: BURLINGTON, CAMDEN, GLOUCESTER, MERCER, SALEM

	State	PSE&G Electric	Atlantic City Electric	JCP&L	PSE&G Gas	South Jersey Gas	NJ Natural Gas	Elizabethtown Gas	Veolia
08001	X		X			X			X
08002	X	X			X				X
08003	X	X			X	X			X
08004	X		X				X		X
08005	X		X		X	X	X		X
08007	X	X			X	X			X
08009	X		X				X		X
08010	X	X			X				X
08012	X		X			X	X		X
08014	X		X			X			X
08015	X	X		X	X				X
08016	X	X			X				X
08019	X	X	X		X	X	X		X
08020	X		X						X
08021	X		X			X	X		X
08022	X	X		X	X				X
08023	X		X			X			X
08026	X		X				X		X
08027	X		X			X			X
08028	X		X			X			X
08029	X	X					X		X
08030	X	X							X
08031	X	X			X		X		X
08033	X	X			X				X
08034	X	X			X				X
08035	X	X			X				X
08036	X	X			X				X
08037	X		X				X		X
08038	X		X			X			X
08041	X	X		X	X				X

	State	PSE&G Electric	Atlantic City Electric	JCP&L	PSE&G Gas	South Jersey Gas	NJ Natural Gas	Elizabethtown Gas	Veolia
08042	X	X			X				X
08043	X		X				X		X
08045	X	X			X	X			X
08046	X	X			X				X
08048	X	X			X				X
08049	X	X					X		X
08051	X	X				X			X
08052	X	X			X				X
08053	X	X	X		X	X			X
08054	X	X			X				X
08055	X	X	X		X	X			X
08056	X		X			X			X
08057	X	X			X				X
08059	X	X			X				X
08060	X	X			X				X
08061	X	X				X			X
08062	X		X			X			X
08063	X	X			X				X
08065	X	X			X				X
08066	X	X	X		X	X			X
08067	X		X			X			X
08068	X	X	X	X	X				X
08069	X		X			X			X
08070	X		X			X			X
08071	X		X			X			X
08075	X	X			X				X
08077	X	X			X				X
08078	X	X					X		X
08079	X		X			X			X
08080	X		X			X			X



### NEW JERSEY: BURLINGTON, CAMDEN, GLOUCESTER, MERCER, SALEM

	State	PSE&G Electric	Atlantic City Electric	JCP&L	PSE&G Gas	South Jersey Gas	NJ Natural Gas	Elizabethtown Gas	Veolia
08081	X		X			X	X		X
08083	X						X		X
08084	X		X				X		X
08085	X		X			X			X
08086	X	X			X	X			X
08087	X		X				X		X
08088	X		X	X	X	X	X		X
08088	X	X			X				X
08089	X		X				X		X
08090	X	X	X			X			X
08091	X		X				X		X
08093	X	X			X				X
08094	X		X			X			X
08095	X		X				X		X
08096	X	X			X	X			X
08097	X	X				X			X
08098	X		X			X			X
08102	X	X			X				X
08103	X	X			X				X
08104	X	X			X				X
08105	X	X			X				X
08106	X	X			X				X
08107	X	X			X				X
08108	X	X			X				X
08109	X	X			X				X
08110	X	X			X				X
08215	X		X				X		X
08302	X		X			X			X
08312	X		X			X			X
08318	X		X			X			X

	State	PSE&G Electric	Atlantic City Electric	JCP&L	PSE&G Gas	South Jersey Gas	NJ Natural Gas	Elizabethtown Gas	Veolia
08322	X		X			X			X
08328	X		X			X			X
08343	X		X			X			X
08344	X		X			X			X
08360	X		X			X			X
08501	X	X		X	X				X
08505	X	X			X				X
08511	X	X		X	X				X
08512	X	X		X	X				X
08515	X	X		X	X				X
08518	X	X			X				X
08520	X	X		X	X				X
08525	X	X						X	X
08530	X	X						X	X
08534	X	X			X			X	X
08540	X	X			X			X	X
08542	X	X			X				X
08550	X	X		X	X				X
08554	X	X			X				X
08558	X	X						X	X
08560	X	X			X			X	X
08561	X			X	X				X
08562	X	X		X	X				X
08608	X	X			X				X
08609	X	X			X				X
08610	X	X			X				X
08611	X	X			X				X
08618	X	X			X				X
08619	X	X			X				X
08620	X	X		X	X				X

A guide for building owners to current incentive programs for energy efficient retrofits offered by state agencies and utility companies in the ten-county Hub region.

### NEW JERSEY: BURLINGTON, CAMDEN, GLOUCESTER, MERCER, SALEM

	State	PSE&G Electric	Atlantic City Electric	JCP&L	PSE&G Gas	South Jersey Gas	NJ Natural Gas	Elizabethtown Gas	Veolia
08628	X	X			X				X
08629	X	X			X				X
08638	X	X			X				X
08640	X	X		X	X				X
08641	X	X		X	X				X
08648	X	X			X				X
08690	X	X			X				X
08691	X	X		X	X				X
08759	X			X	X				X

## NEW JERSEY: BURLINGTON, CAMDEN, GLOUCESTER, MERCER, SALEM

### State of New Jersey - Clean Energy Program NJ Board of Public Utilities

#### New Jersey SmartStart Buildings

New Jersey SmartStart Buildings is a program sponsored by the New Jersey Board of Public Utilities in partnership with New Jersey's gas and electric utilities. The program has three main project categories: new commercial/industrial construction, commercial/industrial retrofits, and schools. The incentives provided through this program are available to non-residential retail electric and/or gas service customers of the participating New Jersey utilities: Atlantic City Electric, Jersey Central Power & Light, Rockland Electric Company, New Jersey Natural Gas, Elizabethtown Gas, PSE&G, and South Jersey Gas. Incentives for new construction are only available for projects within New Jersey Smart Growth\* areas while retrofit incentives are available to all commercial and industrial customers as described above. Public schools are exempt from the Smart Growth requirement for new construction, as are building expansions and replacements that meet certain criteria. The Smart Growth requirement will also be waived for projects located in areas Hurricane Sandy designated storm damaged areas for projects enrolled between October 29, 2012 and June 30, 2013.

Main: <http://www.njcleanenergy.com/commercial-industrial/programs/nj-smartstart-buildings/nj-smartstart-buildings>

After Hurricane Sandy: <http://www.njcleanenergy.com/sandy>

Equipment Incentives: <http://www.njcleanenergy.com/commercial-industrial/programs/nj-smartstart-buildings/tools-and-resources/equipment-incentives/equi>

Food Equipment Incentives: <http://www.njcleanenergy.com/commercial-industrial/programs/nj-smartstart-buildings/food-service-equipment-incentives>

#### Pay for Performance

A comprehensive energy efficiency program that provides incentives towards whole-building energy improvements. Intends to save 15% or more on energy. Starts with an Energy Reduction Plan developed by an energy expert selected from a network of Program Partners.

<http://www.njcleanenergy.com/commercial-industrial/programs/pay-performance/existing-buildings>

#### Combined Heat & Power and Fuel Cells: less than or equal to 1MW

Incentives are available for Combined Heat and Power and Fuel Cell systems with recovery and productive use of waste heat that are located on-site.

<http://www.njcleanenergy.com/commercial-industrial/programs/combined-heat-power/combined-heat-power-and-fuel-cells-1-mw>

#### Combined Heat & Power and Fuel Cells: large scale CHP & Fuel Cell

Fixed asset purchases for new installations and expansions of existing facilities with new equipment.

[http://www.njeda.com/web/Aspx\\_pg/Templates/Npic\\_Text.aspx?DocId=1706&menuid=1550&topid=722&levelid=6&midid=1357](http://www.njeda.com/web/Aspx_pg/Templates/Npic_Text.aspx?DocId=1706&menuid=1550&topid=722&levelid=6&midid=1357)

#### Local Government Energy Audit

Pre-qualified auditing firms deliver an investment grade audit. The Program will subsidize 100% of the cost of the audit. When the audit is complete, a list is provided of recommended, cost-effective energy efficiency measures and facility upgrades that will reduce operating expenses and, in many cases, improve the health and productivity of the buildings' occupants. Most of those measures will be eligible for additional incentives.

<http://www.njcleanenergy.com/commercial-industrial/programs/local-government-energy-audit/local-government-energy-audit>

#### Energy Savings Improvement Program (ESIP)

A State law allows government agencies to make energy related improvements to their facilities and pay for the costs using the value of energy savings that result from the improvements.

<http://www.njcleanenergy.com/commercial-industrial/programs/energy-savings-improvement-program>

## NEW JERSEY: BURLINGTON, CAMDEN, GLOUCESTER, MERCER, SALEM

### State of New Jersey - Clean Energy Program *NJ Board of Public Utilities (cont'd)*

#### Direct Install

Direct Install is a turnkey solution to upgrade to high efficiency equipment. Eligible systems include lighting, HVAC, refrigeration, motors, natural gas, and variable frequency drives.

<http://www.njcleanenergy.com/commercial-industrial/programs/direct-install>

#### Property Tax Exemption for Renewable Energy Systems

In October 2008, New Jersey enacted legislation exempting renewable energy systems used to meet on-site electricity, heating, cooling, or general energy needs from local property taxes. Eligible renewable energy systems include solar PV, wind, fuel cells, sustainable biomass, geothermal electric, landfill gas, hydroelectric, resource recovery, wave, and tidal systems that produce electricity. Systems that produce energy from solar thermal energy (e.g., solar hot water) or geothermal energy (e.g., geothermal heat pumps) are also eligible for the exemption. The exemption may be claimed for all qualified systems installed on residential, commercial, industrial, or mixed use buildings as accessory uses.

[http://www.state.nj.us/treasury/taxation/pdf/other\\_forms/lpt/cres.pdf](http://www.state.nj.us/treasury/taxation/pdf/other_forms/lpt/cres.pdf)

#### Solar Energy Sales Tax Exemption

A full exemption from the state's sales tax (currently 7%) for all solar energy equipment. This exemption is available to all taxpayers. All major types solar energy equipment, including equipment for passive solar design, are considered eligible for the exemption.

<http://www.state.nj.us/treasury/taxation/pdf/pubs/sales/su6.pdf>

### PSE&G - Electric

#### Un-named Solar Credit Program

Customers with a solar load or wind of 2 MW or less based on annual maximum kW demand may be eligible to send excess kWhrs back for a credit.

[http://www.pseg.com/home/save/manage\\_costs/njcep.jsp](http://www.pseg.com/home/save/manage_costs/njcep.jsp)

*Also See State Programs.*

### Veolia

#### Customer Energy Solutions

Customized customer incentives are available for energy plant development, operations and maintenance. Veolia Energy can offer energy efficiency and performance guarantees for central utility plants and distributed energy systems throughout the Philadelphia region.

<http://www.veoliaenergyna.com/veolia-energy-north-america/locations/philadelphia.htm>

### Atlantic City Electric

#### JCP&L

#### PSE&G - Gas

#### South Jersey Gas

#### New Jersey Natural Gas

#### Elizabethtown Gas

*See State Programs.*